

MARY KAY®



Starry Night

Biscotti

Cinnabar

Hazelnut

Merlot



Emerald Noir


Crystalline

Dusty Rose

Hot Fudge

Onyx

***NEW!* MARY KAY**
CHROMAFUSION™ EYE SHADOW

A collection of cosmetic product swatches arranged around the central text. On the left, there is a large, textured swatch of deep magenta. To the right, there are several swatches of gold and bronze powders, some in solid blocks and others as loose, crumbly textures. At the bottom, there are swatches of reddish-brown and dark brown powders, along with a dark, textured swatch that looks like a liquid or cream product.

BERRIES & GOLD



BERRIES & GOLD



BERRIES & GOLD

1. Use Sand Castle as a base shade on the eyelids.
2. Apply Candlelight in the centers of the eyelids.
3. Accent the outer corners of the eyelids with Merlot.
4. Line the top and bottom lashlines with MK Deep Brown eyeliner, and finish with mascara of your choice.
5. Finish with Rosy Nude blush and Crushed Berry gel semi-matte lipstick.





COOL METALS





COOL METALS



COOL METALS

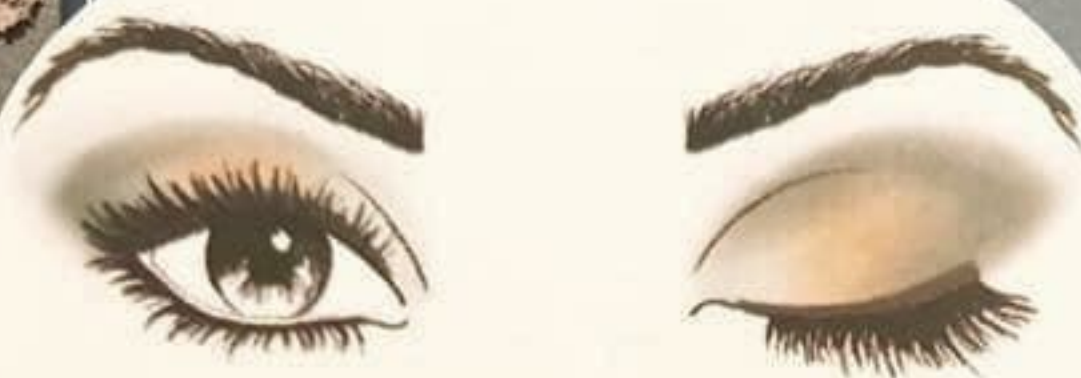
1. Use **Smoky Quartz** on the middle of eyelids as the base shade.
2. Apply **Stormy** in the outer corners of the eyes for definition.
3. Highlight the inner corners of the eyes with **Crystalline**.
4. Add **MK Black** eyeliner and mascara of your choice.
5. Finish with **Shy Blush** blush and **Red Smolder** gel semi-shine lipstick.







GOLDEN MOSS



GOLDEN MOSS

1. Use **Biscotti** as a base on the eyelids.
2. Apply **Gold Status** in the centers of the eyelids.
3. Smudge **Moss** into the eye creases in a "V" shape and along the top lashlines.
4. Add **MK Deep Brown** eyeliner to top lashlines, and add mascara of your choice.
5. Finish with **Juicy Peach** blush and **Naturally Buff** gel semi-shine lipstick.



NEUTRAL MATTES





NEUTRAL MATTES



NEUTRAL MATTES

1. Use **Sand Castle** as your base shade on the entire eyelid.
2. Gently crease and define the lower lashline with **Cinnabar**.
3. Enhance the eye using **Espresso** on the outer "V" of the eye.
4. Add **MK Deep Brown** eyeliner and Mascara of your choice.
5. Finish with **Hot Coral** blush and **Crushed Berry** gel semi-matte lipstick.

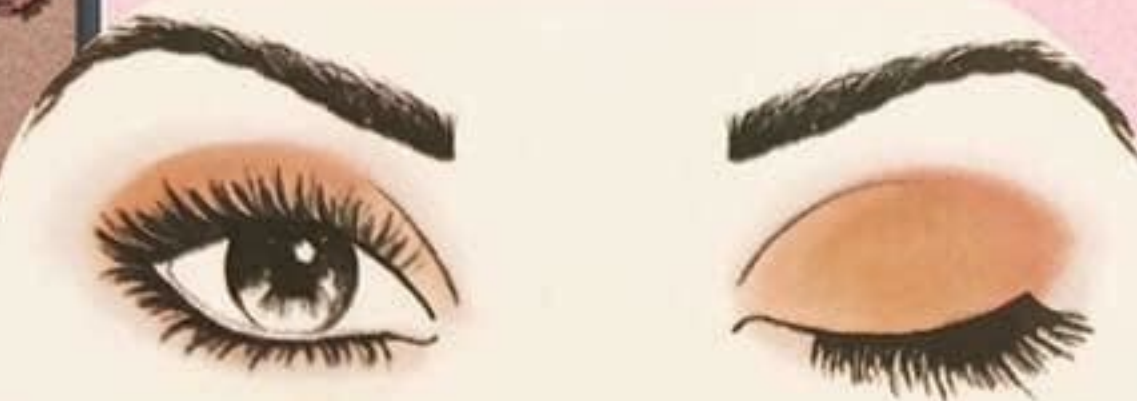




PINKS & MAUVES



PINKS & MAUVES



PINKS & MAUVES


1. Use **Rose Gold** as the base shade on eyelids.
2. Apply **Dusty Rose** to the creases and lower lashlines.
3. Highlight the inner corners of eyes and brow bones with **Blossom**.
4. Add **MK Deep Brown** eyeliner and mascara of your choice.
5. Finish with **Rosy Nude** blush and **Rosewood** gel semi-shine lipstick.





PINKS & NEUTRALS





PINKS & NEUTRALS



PINKS & NEUTRALS

1. Use **Cashmere Haze** as a base on the eyelids.
2. Apply **Golden Mauve** in the eye creases.
3. Highlight inner corners of the eyes with **Blossom**.
4. Apply **MK Black** eyeliner to top lashlines, and add mascara of your choice.
5. Finish with **Hint of Pink** blush and **Rosewood** gel semi-shine lipstick.





PURPLES & NEUTRALS



PURPLES & NEUTRALS



PURPLES & NEUTRALS

1. Use **Candlelight** as a base shade on the eyelids.
2. Apply **Hot Fudge** in the eye creases.
3. Smudge **Frozen Iris** in a “V” shape on top of the **Hot Fudge** just in the outer corners.
4. Apply **MK Deep Brown** eyeliner to top lashlines, and add mascara of your choice.
5. Finish with **Darling Pink** blush and **Apple Berry** gel semi-shine lipstick.



PURPLES & PLUMS



PURPLES & PLUMS



PURPLES & PLUMS

1. Give eyes an all-over wash of color by using **Sunlit Rose** as the base shade.
2. Add **Merlot** in the creases and in the outer "V" of the eyes.
3. Apply **MK Deep Brown** eyeliner to top and bottom lashlines.
4. Apply **Sweet Plum** on top of eyeliner, and finish with mascara of your choice.
5. Finish with **Desert Rose** blush and **Berry Couture** gel semi-shine lipstick.





STORMY BLUE





STORMY BLUE



STORMY BLUE

1. Apply **Stormy** as a base shade on the eyelids.
2. Add **Evening Navy** in the creases starting from the outer corners.
3. Accent eyes using **Onyx** to blend into outer corners only and along the top lashlines.
4. Add **MK Black** eyeliner to the top lashlines, and add mascara of your choice.
5. Finish with **Golden Copper** blush and **Apple Berry** gel semi-shine lipstick.





WARM METALS





WARM METALS

1. Apply **Gold Status** as a base shade all over eyelids.
2. Accent the centers of the eyelids with **Shiny Penny**. Swipe this shade along the bottom lashlines.
3. Apply **Burnished Bronze** to the outer "V" of the eyes.
4. Add **MK Deep Brown** eyeliner and mascara of your choice.
5. Finish with **Wineberry** blush and **Scarlet Red** gel semi-shine lipstick.



Mary Kay

CHROMAFUSION

Before

After

Independent Beauty Consultant

What do you like best

Model

What Skin Care Set

Occupation

Comments

Winter Look

Date

Mary Kay

CHROMAFUSION

Before

After

Independent Beauty Consultant

Model

Occupation

Winter Look

Date

What do you like best

What Skin Care Set

Comments

Mary Kay

CHROMAFUSION

Before

After

Independent Beauty Consultant

Model

Occupation

Winter Look

Date

What do you like best

What Skin Care Set

Comments

Mary Kay

CHROMAFUSION

Before

After

Independent Beauty Consultant

Model

Occupation

Winter Look

Date

What do you like best

What Skin Care Set

Comments

Mary Kay

CHROMAFUSION

Before

After

Independent Beauty Consultant

Model

Occupation

Winter Look

Date

What do you like best

What Skin Care Set

Comments

Mary Kay

CHROMAFUSION

Before

After

Independent Beauty Consultant

Model

Occupation

Winter Look

Date

What do you like best

What Skin Care Set

Comments

Mary Kay

CHROMAFUSION

Before

After

Independent Beauty Consultant

Model

Occupation

Winter Look

Date

What do you like best

What Skin Care Set

Comments

Mary Kay

CHROMAFUSION

Before

After

Independent Beauty Consultant

Model

Occupation

Winter Look

Date

What do you like best

What Skin Care Set

Comments

Mary Kay

CHROMAFUSION

Before

After

Independent Beauty Consultant

Model

Occupation

Winter Look

Date

What do you like best

What Skin Care Set

Comments

Mary Kay

CHROMAFUSION

Before

After

Independent Beauty Consultant

Model

Occupation

Winter Look

Date

What do you like best

What Skin Care Set

Comments

Mary Kay

CHROMAFUSION

Before

After

Independent Beauty Consultant

Model

Occupation

Winter Look

Date

What do you like best

What Skin Care Set

Comments

Mary Kay

CHROMAFUSION

Before

After

Independent Beauty Consultant

Model

Occupation

Winter Look

Date

What do you like best

What Skin Care Set

Comments

Mary Kay

CHROMAFUSION

Before

After

Independent Beauty Consultant

Model

Occupation

Winter Look

Date

What do you like best

What Skin Care Set

Comments

Mary Kay

CHROMAFUSION

Before

After

Independent Beauty Consultant

Model

Occupation

Winter Look

Date

What do you like best

What Skin Care Set

Comments

Mary Kay

CHROMAFUSION

Before

After

Independent Beauty Consultant

Model

Occupation

Winter Look

Date

What do you like best

What Skin Care Set

Comments

Mary Kay

CHROMAFUSION

Before

After

Independent Beauty Consultant

Model

Occupation

Winter Look

Date

What do you like best

What Skin Care Set

Comments

Mary Kay

CHROMAFUSION

Before

After

Independent Beauty Consultant

Model

Occupation

Winter Look

Date

What do you like best

What Skin Care Set

Comments

Mary Kay

CHROMAFUSION

Before

After

Independent Beauty Consultant

What do you like best

Model

What Skin Care Set

Occupation

Comments

Winter Look

Date

Mary Kay

CHROMAFUSION

Before

After

Independent Beauty Consultant

Model

Occupation

Winter Look

Date

What do you like best

What Skin Care Set

Comments

Mary Kay

CHROMAFUSION

Before

After

Independent Beauty Consultant

Model

Occupation

Winter Look

Date

What do you like best

What Skin Care Set

Comments

Mary Kay

CHROMAFUSION

Before

After

Independent Beauty Consultant

Model

Occupation

Winter Look

Date

What do you like best

What Skin Care Set

Comments

Mary Kay

CHROMAFUSION

Before

After

Independent Beauty Consultant

Model

Occupation

Winter Look

Date

What do you like best

What Skin Care Set

Comments

Mary Kay

CHROMAFUSION

Before

After

Independent Beauty Consultant

Model

Occupation

Winter Look

Date

What do you like best

What Skin Care Set

Comments

Mary Kay

CHROMAFUSION

Before

After

Independent Beauty Consultant

Model

Occupation

Winter Look

Date

What do you like best

What Skin Care Set

Comments

Mary Kay

CHROMAFUSION

Before

After

Independent Beauty Consultant

What do you like best

Model

What Skin Care Set

Occupation

Comments

Winter Look

Date

Mary Kay

CHROMAFUSION

Before

After

Independent Beauty Consultant

What do you like best

Model

What Skin Care Set

Occupation

Comments

Winter Look

Date

Mary Kay

CHROMAFUSION

Before

After

Independent Beauty Consultant

What do you like best

Model

What Skin Care Set

Occupation

Comments

Winter Look

Date

Mary Kay

CHROMAFUSION

Before

After

Independent Beauty Consultant

What do you like best

Model

What Skin Care Set

Occupation

Comments

Winter Look

Date

Mary Kay

CHROMAFUSION

Before

After

Independent Beauty Consultant

What do you like best

Model

What Skin Care Set

Occupation

Comments

Winter Look

Date

Mary Kay

CHROMAFUSION

Before

After

Independent Beauty Consultant

Model

Occupation

Winter Look

Date

What do you like best

What Skin Care Set

Comments
